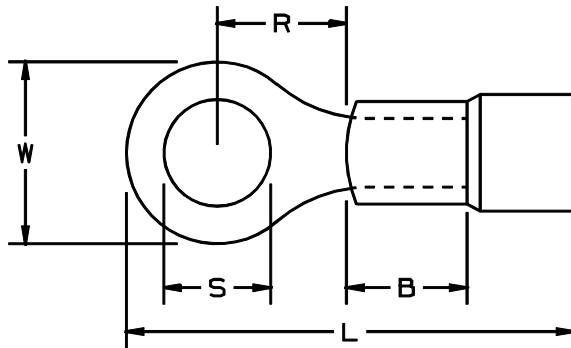


THIS COPY IS PROVIDED ON A RESTRICTED BASIS AND IS NOT TO BE USED IN ANY WAY DETRIMENTAL TO THE INTERESTS OF PANDUIT CORP.



(BEFORE SHRINKING)

NOTES :

1. UL LISTED AND CSA CERTIFIED AFTER HEAT SHRINKING FOR:
  - A. 600 V MAX. VOLTAGE RATING
  - B. 257°F (125°C) MAX. TEMP. RATING
  - C. STRANDED COPPER WIRE ONLY (SEE CHART FOR WIRE RANGE)
2. MATERIAL :
  - A. TERMINAL - TIN PLATED COPPER WITH BRAZED SEAM
  - B. INSULATOR - HEAT SHRINKABLE POLYOLEFIN WITH HOT MELT SEALANT
3. MINIMUM SHRINK TEMPERATURE: 300°F (150°C)
4. ALL DIMENSIONS SHOWN ARE NOMINAL. DIMENSIONS IN BRACKETS ARE IN MILLIMETERS.
5. INSTALLATION TOOL: CT-310

6. WIRE STRIP LENGTH:
  - 5/16 <sup>+1/16</sup> <sub>-.0</sub>
  - (7.9 <sup>+1.6</sup> <sub>-.0</sub>)

PANDUIT PART NUMBER	WIRE RANGE (AWG)	STUD SIZE S	DIMENSIONS			MAX WIRE INSULATION DIA	R MIN WASHER RADIUS	INSULATION COLOR	STD PKG QTY	BULK PKG QTY
			B	W	L					
PH18-6R	22-18	#6	.250 (6.35)	.25 (6.35)	1.05 (26.67)	.170 (4.32)	.130 (3.30)	RED	25	500
PH18-8R	22-18	#8	.250 (6.35)	.31 (7.87)	1.08 (27.43)	.170 (4.32)	.140 (3.56)	RED	25	500
PH18-10R	22-18	#10	.250 (6.35)	.31 (7.87)	1.08 (27.43)	.170 (4.32)	.172 (4.37)	RED	25	500
PH18-14R	22-18	1/4"	.250 (6.35)	.47 (11.94)	1.30 (33.02)	.170 (4.32)	.290 (7.37)	RED	25	500
PH14-6R	16-14	#6	.250 (6.35)	.31 (7.87)	1.06 (26.92)	.190 (4.83)	.130 (3.30)	BLUE	25	500
PH14-8R	16-14	#8	.250 (6.35)	.31 (7.87)	1.03 (26.16)	.190 (4.83)	.140 (3.56)	BLUE	25	500
PH14-10R	16-14	#10	.250 (6.35)	.31 (7.87)	1.12 (28.45)	.190 (4.83)	.172 (4.37)	BLUE	25	500
PH14-14R	16-14	1/4"	.250 (6.35)	.46 (11.68)	1.24 (31.50)	.190 (4.83)	.290 (7.37)	BLUE	25	500
PH14-56R	16-14	5/16"	.250 (6.35)	.46 (11.68)	1.27 (32.26)	.190 (4.83)	.290 (7.37)	BLUE	25	500
PH14-36R	16-14	3/8"	.250 (6.35)	.53 (13.46)	1.26 (32.00)	.190 (4.83)	.290 (7.37)	BLUE	25	500
PH10-8R	12-10	#8	.250 (6.35)	.37 (9.40)	1.22 (30.99)	.240 (6.10)	.140 (3.56)	YELLOW	20	200
PH10-10R	12-10	#10	.250 (6.35)	.37 (9.40)	1.20 (30.48)	.240 (6.10)	.172 (4.37)	YELLOW	20	200
PH10-14R	12-10	1/4"	.250 (6.35)	.52 (13.21)	1.41 (35.81)	.240 (6.10)	.290 (7.37)	YELLOW	20	200
PH10-36R	12-10	3/8"	.250 (6.35)	.59 (14.99)	1.45 (36.83)	.240 (6.10)	.290 (7.37)	YELLOW	20	200
PH10-12R	12-10	1/2"	.250 (6.35)	.72 (18.29)	1.54 (39.12)	.240 (6.10)	.350 (8.89)	YELLOW	20	200



LISTED  
1200  
E52164



CERTIFIED  
73971

A41456\_02

02	2/01	KMD		FILE SPEC WAS N41456AA_PCD_01					TINLEY PARK, ILLINOIS		
01	6/95	MS		UPDATED NOTES AND DIMENSIONS	03352						
00	12/90	DL	RS	RELEASED	00221	KS	LA	HEAT SHRINK INSULATED RING TERMINALS			
REV	DATE	BY	CHK	DESCRIPTION	ECN #	PM	CUST	DRAWN BY	CHK'D	SCALE	DRAWING NO.
								DRL		NONE	A41456